

# BRIDGNORTH LIVESTOCK MARKET

## WEEKLY REPORT – 12.03.24



### WASHING OUT VEHICLES/TRAILERS

Please note that you **MUST WASH OUT** your vehicle/trailer after unloading at this market. **IF YOU DO NOT WASH OUT** your vehicle you **MUST** fill out an "Undertaking to Cleanse and Disinfect Vehicle" FMAW27 Form which are available from the Market Office.

### 70 PRIME CATTLE

**Auctioneer – Mark Burgoyne 07831 192603**

A disappointing number forward today with 35 cattle less than last week. Despite some of the larger players dropping prices or threatening it, a firm trade resulted – being at least as dear as recent sales with all clean cattle averaging 288p/kg on the lot including overagers!

Our steer entry was below double figures seeing best to 300p/kg with two selling above £2000 to £2023.

A nice show of heifers sold to a top of 350p/kg with numerous females 300p/kg and above. Heavier females sold to a top of £1965 in the lump.

Low bull numbers with some very lean cattle forward. Heavy suckler bulls topped at 293p/kg adding up nicely to £2151. Black and White bulls sold to 236p/kg.

### ONLY 55 CLEAN CATTLE

#### ONLY 8 STEERS SOLD TO OV AV 261P/KG

668kg Limousin from Mrs B took top spot at 300p/kg with her handy weight Limmie to 298p/kg. All the other steers were Herefords or dairy bred and sold to £2022.80 for 778kg British Blue crosses from Brian Whiteman, fresh back from his vacation.

#### 47 HEIFERS SOLD TO OV AV 294P/KG

A super run of four from Evans (Curdale) sold to a high of 350p/kg for 528kg with others to 349p/kg and 338p/kg. Mrs B had some tidy heifers selling to 338p/kg for 558kg British Blues with her Limousin to 336p/kg for 546kg. Roger Jordin sold his best 574kg Lim to 337p/kg. Shapey 614kg Limousins again from that 'deserving cause' topped the headage stakes at £1964.80.

#### 15 BULLS SOLD TO OV AV 247P/KG

Well finished bulls were well rewarded today but very lean types were found buyers more 'choosy'!

Ben Rochelle sold his super blue Limmie to 293p/kg for 734kg (£2150.52) with Dave Preece selling his blue to 280p/kg for 712kg. 590kg Herefords from Richard Yates sold to 271p/kg with Holstein Friesians from Mr Parrott to 236p/kg for 588kg.

### **MORE CATTLE URGENTLY REQUIRED FOR NEXT TUESDAY PLEASE**

#### AFU CATTLE VENDORS PLEASE NOTE:

Could producers selling in the Red Market from Approved Finishing Units (AFU) please provide a copy of your licence (TB24h) for our records. This is a requirement of our licencing with the Veterinary Inspectorate.

#### STEERS P/KG AND £/HEAD

300p/kg	£2004	668kg	26m	LIMX	C Burgoyne
298p/kg	£1829	614kg	23m	LIMx	C Burgoyne
260p/kg	£2023	778kg	26m	BRB	BV & DT Whiteman
258p/kg	£1924	746kg	27m	BRB	BV & DT Whiteman

#### HEIFERS P/KG AND £/HEAD

350p/kg	£1848	528kg	18m	LIMx	RC Evans Curdale
349p/kg	£1919	550kg	17m	LIMx	RC Evans Curdale
345p/kg	£1773	514kg	21m	LIMx	EP Parkes & Sons
338p/kg	£1777	526kg	21m	LIMx	RC Evans Curdale
338p/kg	£1649	488kg	22m	LIMx	EP Parkes & Sons
338p/kg	£1919	568kg	25m	BRB	C Burgoyne
338p/kg	£1892	560kg	19m	LIMx	RC Evans Curdale
337p/kg	£1934	574kg	23m	LIMx	W Jordin & Son
336p/kg	£1834	546kg	17m	LIMx	C Burgoyne
320p/kg	£1715	536kg	22m	LIMx	W Jordin & Son
320p/kg	£1548	484kg	20m	BRB	EP Parkes & Sons
320p/kg	£1644	514kg	22m	LIMx	W Jordin & Son
320p/kg	£1964	614kg	26m	LIMx	C Burgoyne
318p/kg	£1577	496kg	20m	LIMx	W Jordin & Son
318p/kg	£1946	612kg	29m	LIMx	C Burgoyne
316p/kg	£1700	538kg	24m	LIMx	EP Parkes & Sons
316p/kg	£1592	504kg	24m	LIMx	EP Parkes & Sons
310p/kg	£1605	518kg	22m	LIMx	CO Watkins & Co
308p/kg	£1484	482kg	22m	LIMx	EP Parkes & Sons
306p/kg	£1732	566kg	23m	LIMx	EP Parkes & Sons

#### BULL P/KG AND £/HEAD

293p/kg	£2150	734kg	15m	LIMx	R & B Rochelle
280p/kg	£1993	712kg	17m	BRB	A Preece & Son
271p/kg	£1598	590kg	14m	HEx	H Yates
270p/kg	£1787	662kg	18m	LIMx	CO Watkins & Co
262p/kg	£1671	638kg	22m	LIMx	SH Fish & Sons
262p/kg	£1477	564kg	12m	HEx	H Yates
261p/kg	£1508	578kg	13m	HEx	H Yates
260p/kg	£1440	554kg	22m	LIMx	SH Fish & Sons

#### DAIRY BULLS P/KG AND £/HEAD

236p/kg	£1387	588kg	17m	HOL	JH Parrott & Son
---------	-------	-------	-----	-----	------------------



Livestock & Auction Centre, Tasley, Bridgnorth, Shropshire, WV16 4QR

T: 01746 762 666 | F: 01746 767 475

E: enquiries@nockdeighton.co.uk | www.nockdeightonagricultural.co.uk

Regulated by RICS

### IMPORTANT NOTICE TO ALL SHEEP VENDORS:

- Please ensure all sheep are tagged in the approved manner before arrival to the auction
- Lamé or unsound sheep will NOT be accepted and will be returned to the vendor
- All sheep presented in Bridgnorth are deemed to be fit for human consumption, free from imperfections and have completed any veterinary medicine withdrawal

### 1776 PRIME HOGGS

#### **Auctioneer – Martin Clack 07977 067519**

An overall market average of 390p/kg. Record prices with a dozen pens over 400p/kg to a top of 440p/kg for 47kg Texels from Nigel Kinsey and to a top price per head of £207 for 53.5kg Suffolk hogs from Neale Dalton.

This trade has never been seen, it being a combination of Easter, Ramadan and a shortage of finished hogs resulting in a sale average of £169.60 which is up £15 per head on last week.

Hoggs under 40kg were a much improved trade with 'Texel type' from Simon Pennington to 406p/kg and plenty over 390p/kg.

Heavier hoggs were 365p/kg to 380p/kg to a peak of 387p/kg for 53.5kg with plenty of 53kg plus hoggs breaking the £200 barrier.

#### **MORE HOGGS REQUIRED NEXT WEEK PLEASE**

#### **Top Prices p/kg**

440p/kg	47.0kg	N Kinsey
440p/kg	47.0kg	N Kinsey
438p/kg	45.0kg	IGC Morris
436p/kg	42.0kg	N Kinsey
432p/kg	46.0kg	J Cantrill
431p/kg	45.0kg	IGC Morris

#### **Top Prices £/Head**

£207.00	53.5kg	LH Dalton Haughton Ltd
£206.80	54.0kg	LH Dalton Haughton Ltd
£206.80	54.5kg	LH Dalton Haughton Ltd
£202.80	52.0kg	LH Dalton Haughton Ltd
£201.25	52.0kg	LH Dalton Haughton Ltd
£200.50	50.5kg	WH Meredith



### 740 EWES

#### **Auctioneer – Ollie Clack 07891 343673**

Very few Continental ewes which sold to £198 for Texels from Ben Rochelle. Second quality ewes dearer with Suffolk ewes to £164 and Mules to £120.

As with recent sales the better shaped Continental ewes would be most sought after especially lean meat.

Small and shapely ewes around £150, lean Mules around £85 and lean Suffolks looking well sold around £120.

Smaller Romneys to £106, Scotch Blackface £70, Swales £70, small Beulah £65 and Cheviot ewes easily sold to £89.

#### **MORE EWES REQUIRED NEXT WEEK WITH VERY EXCITABLE BUYING SUPPORT!**

#### **Top Prices £/Head**

£198.00	Texel	R & B Rochelle
£190.00	Texel	R & B Rochelle
£172.00	Texel	J Pritchard
£164.00	Suffolk x Mule	J Pritchard
£164.00	Suffolk x Mule	J Pritchard
£158.00	Texel	J Pritchard

### SHEEP VENDORS PLEASE NOTE:

Following a visit by Shropshire Trading Standards a range of tagging issues has been identified. Even though Nock Deighton Agricultural staff will read non-EID ear tags and our vendor printouts represent 100% accuracy, it is a requirement to have all sheep tagged and compliant with current legislation BEFORE unloading in the auction.

#### **ALL SHEEP MUST BE TAGGED WITH ELECTRONIC TAGS**

## **EASTER CATTLE AND SHEEP SHOW NEXT TUESDAY 19<sup>th</sup> MARCH 2024**

### **PRIZES FOR THE FOLLOWING:**

#### **STEER**

Highest pence/kilo	1 <sup>st</sup> - £30.00	2 <sup>nd</sup> - £15.00
Highest pounds/head	1 <sup>st</sup> - £30.00	2 <sup>nd</sup> - £15.00

#### **HEIFER**

Highest pence/kilo	1 <sup>st</sup> - £30.00	2 <sup>nd</sup> - £15.00
Highest pounds/head	1 <sup>st</sup> - £30.00	2 <sup>nd</sup> - £15.00

#### **BULL**

Highest pence/kilo	1 <sup>st</sup> - £30.00	2 <sup>nd</sup> - £15.00
Highest pounds/head	1 <sup>st</sup> - £30.00	2 <sup>nd</sup> - £15.00

#### **LAMBS – PEN OF 2 OR MORE**

Highest pence/kilo	£30.00
--------------------	--------

#### **HOGGS – PEN OF 6 OR MORE**

Highest pence/kilo	£30.00
--------------------	--------

#### **EWES – PEN OF 2 OR MORE**

Highest pounds/head	£30.00
---------------------	--------



## NEXT STORE SALE THIS FRIDAY 15<sup>th</sup> MARCH 2024

Entries to date include:

100 STORE CATTLE and 100 STORE HOGGETTS

*Further entries anticipated*

*Catalogues on-line and Facebook*

**Contact: Mark Burgoyne 07831 192603**

**Martin Clack 07977 067519**

**or Ollie Clack 07891 343673**

## COLLECTIVE MACHINERY SALE

To be held at the Livestock Market, Bridgnorth

**SATURDAY 23<sup>rd</sup> MARCH 2024**



Entry forms available in the office or on the website

### ENTRIES STILL BEING ACCEPTED

Send in your entries and email photographs to  
[reception@nockdeighton.co.uk](mailto:reception@nockdeighton.co.uk)

**Contact: Dylan Ward on 07415 815266 or**

**Ollie Clack on 07891 343673**

## FOR SALE BY AUCTION

**LOT 1 – COMMERCIAL AND STORAGE BARN**

**LOT 2 – PASTURE PADDOCKS**

**TASLEY, BRIDGNORTH, WV16 4RE**

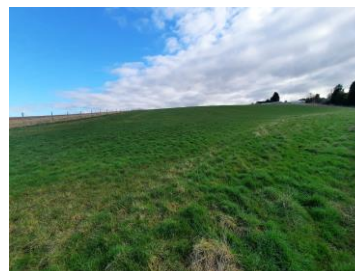
### Lot 1 - Storage and Commercial Investment

- Former farmyard complex now utilised as a storage facility and workshops
- Good monthly income from inside and outside space with a variety of uses
- Good access to local facilities



### Lot 2 – Pasture Paddock

- Pasture paddock extending to 2.94 acres (1.19 ha)
- Commanding views over surrounding countryside
- Good access to local facilities



**GUIDE PRICE:**

**LOT 1 - £170,000**

**LOT 2 - £60,000**

**AUCTION TO BE HELD ON 10<sup>th</sup> APRIL 2024**

Register for an auction pack –  
[reception@nockdeighton.co.uk](mailto:reception@nockdeighton.co.uk)

## FOR SALE DDERWEN GROES, LLANPUMSAINT CARMARTHEN, SA33 6LR

An excellent opportunity to acquire a productive and functional dairy unit in Carmarthenshire



- 183.89 acres in total
- 134.05 ac of pasture and 45.43 ac woodland
- Range of agricultural buildings
- Fullwood milking parlour
- Productive silage ground
- Three/four bedroom farmhouse

**FOR SALE BY PRIVATE TREATY**

**Offers in the region of £1,625,000**

## SUSTAINABLE FARMING INCENTIVE (SFI)

- Three-year Schemes for Environmental Land Management Options
- Payments made quarterly
- Capital items are available under the Capital Only Scheme



Contact James Neame or Camilla Whitehouse on  
01746 762666 for advice and to book an appointment

## FOR SALE

### THE HOPE, DUNSTON HEATH STAFFORD, ST18 9AQ



#### Opportunity for Developers

- Grand period traditional farmhouse in need of refurbishment with large gardens
- Outstanding range of brick-built farm buildings with timber beams throughout
- Planning permission obtained - 02/00367/COU
- To be sold as a whole or in two lots

**OFFERS CIRCA £1,150,000 FOR THE WHOLE OR  
LOT 1 OFFERS BASED ON £600,000 AND  
LOT 2 OFFERS BASED ON £550,000**

## FOR SALE

### DEVELOPMENT OR SELF-BUILD OPPORTUNITY FOR TWO PLOTS, CLUDDLEY, WELLINGTON, TF6 5DR



**Opportunity to build energy conscious homes in a semi-rural location. Full planning has been granted**

- Plot size over half an acre per plot
- Bespoke design based on sustainable Passivhaus
- Near to the market town of Wellington and the Wrekin

**GUIDE PRICE: CIRCA £420,000 FOR THE WHOLE or  
£210,000 PER PLOT**

## FOR SALE

### LOWER LLEGODIG, ABERMULE SY15 6JY



**An excellent opportunity to acquire a smallholding with potential for renovation/modernization**

- Detached, four-bed, farmhouse with exposed beams and slate/tiled floors
- Requires refurbishment following a flood in 2022
- 7.7 acres (3.11 hectares) of land in total including outbuildings, stock-fenced pasture with access

**GUIDE PRICE: £400,000**

## FOR SALE

### BLAENYTHAN, PANTEG CROSS LLANDYSUYL, CEREDIGION, SA443 4SS



**An excellent opportunity to purchase an agricultural holding with large farmhouse and development opportunity**

- Former dairy farm within a ring fence
- Approximately 94.85 acres (38.38 ha) of versatile and grazing land
- Development potential
- South facing land with stunning far-reaching views
- Large farm house with huge potential
- Mixture of traditional and modern farm buildings

**FOR SALE BY PRIVATE TREATY  
Offers in the region of £1,695,000**



## TO LET

### COMMERCIAL BUILDING 8,000 SQ FT, CLAVERLEY WV5 7EE



- An excellent opportunity to rent a large building in a rural location
- Planning to use B8 (storage/distribution)
- Good quality building in secure farmyard
- Multiple access points with roller shutter doors
- Potential to split into two separate units
- Office space available by separate negotiation
- To be let on a Business Lease under the Landlord & Tenant Act 1954

**GUIDE PRICE: £4,000 PER CALENDAR MONTH**

## LAND FOR SALE

### SOUTH WEST OF STABLEFORD BRIDGE, BADGER LANE, STABLEFORD, BRIDGNORTH



#### 59.18 ACRES LAND

- Approximately 59.18 acres (23.94 hectares) of arable, pasture land and river meadow
- Attractive river meadow land adjacent to the River Worfe
- Potential for lake creation (subject to planning)
- Potential for environmental management/ carbon offsetting
- Approximately 1.5 miles of single bank fishing on the River Worfe
- Productive pastures provide excellent grazing while the river meadow areas also provide opportunity for environmental management schemes

For Sale by Private Treaty As a whole or may divide into lots

**GUIDE PRICE: CIRCA £500,000**

## TO LET

### AGRICULTURAL/GENERAL STORAGE BADGER HEATH FARM, WV6 7JU



**485m<sup>2</sup> / 5218ft<sup>2</sup>**

- Former grain storage building
- Concrete portal-frame building
- Located on a working farm approximately two miles off the A454
- Convenient location and good access
- Parking for approximately 10 cars
- Connected to mains electricity only, water connection can be made

**GUIDE PRICE: £15,000 PER ANNUM**

## LAND FOR SALE

### DANESFORD, BRIDGNORTH WV15 6QD

#### 10.97 ACRES EQUINE OR AMENITY LAND



- Level pasture fields
- Pasture land with hard standing parking area
- Convenient location and good access off A442
- Field shelter and stable available by separate negotiation
- Fishing rights available by separate negotiation

For Sale by Private Treaty  
**OFFERS OVER £260,000**



## AMC - Providing Certainty in Uncertain Times

The degeneration of the BPS scheme, combined interest rates rising so quickly and the unprecedented levels of volatility in both commodity prices and input costs, means that forecasting future cashflow is perhaps more difficult than at any other point in recent memory - something which is clearly at the forefront of many farmers' minds.

Such uncertainty is leading to many businesses consolidating by using any surplus cash to reduce debt, rather than investing for the future. For those who do not have the means for debt reduction or are looking to align themselves to take advantage of whatever opportunities emerge from such uncertainty, now may be an appropriate time to review the structure of existing long-term finances to ensure that the business is more resilient, whatever the future may hold.

When considering finance in such a way the rule of thumb is always the same, to borrow over as long as possible (to minimise monthly outgoings) and then to repay as quickly as possible (to minimise the total interest paid to the lender).

Following this principle means that cashflow is not unnecessarily committed to existing loan repayments such that not only can any leaner years be managed more comfortably but capacity remains to service further debt in order to take advantage of unexpected opportunities, such as buying neighbouring land.

When borrowing from AMC, loans can be available for up to 30 years and, when borrowing on a variable rate of interest, the borrower is at liberty to make additional capital repayments at any point in time, hence businesses can borrow over a very long term but then repay much sooner, if cashflow allows.

Opportunities to buy neighbouring land rarely present themselves at the right time and hence AMC's unique ability to offer long-term interest-only funding also allows such opportunities to be taken more with more confidence, while still servicing other commitments.

For more information regarding how reviewing your business finances may be beneficial, speak to Rob McCabe in full confidence on (office) **01746 762666** or (mobile) **07970 981183**

## ANTIQUES & COLLECTABLES AUCTIONS


For over 50 years Nock Deighton Agricultural LLP (NDA) have been holding twice-monthly auctions of antiques, collectables and household furniture. The average lots per auction are in excess of 800 up to 1000, giving a good depth and spread of interest to all who take part. Lots can go for as little as £1 for a mixed box or as much as £3,000 for a specialist item – such as the Regency wrought-iron pad-footed garden bench (below) - which sold following some intense bidding from buyers online and in the sale room.



Dylan Ward and the Auction Team offer a complete service, including house clearances, appraisals, valuations and advice on the best route of sale. Post-sale we can offer post and packing to UK destinations for smaller, light items.

Dylan oversees the categorising and lotting of the diverse items we receive, they are then arranged in the sales room, labelled with the owner's sticker, photographed and finally briefly described for the [easyliveAuction.com](https://www.easyliveauction.com) on-line system.

For the future, Dylan has ambitious ideas in bringing the auction experience closer to interested sellers and buyers with presentation and personal service of auction lots. Auctions can be exciting, especially when bidding is intense. We are seeing many new customers using the on-line system for the first time and being delighted with what they have bought and the service provided by our staff. It is our intention to make the whole experience easy and enjoyable for both buyers and sellers alike.

Sales are now catalogued with a full pictorial version displayed online, with internet bidding, as well as bidding in the saleroom. The new Facebook  page is available by searching for **Nock Deighton Antique & Collectable Auctions** and this shows a selection of lots for forthcoming sales.

**For all Saleroom enquires please contact Dylan Ward**

**07415 815266 or 01746 762666**

or email [antiques@nockdeighton.co.uk](mailto:antiques@nockdeighton.co.uk)

The next Furniture/Antiques Sale will be held on

**Wednesday 20<sup>th</sup> March 2024**

**Sale starts at 10.00am**

The auction will be held on-line at

[www.easyliveauction.com](https://www.easyliveauction.com)

or attend in person

at the Sale Room in Tasley, Bridgnorth

**Viewing days - Monday 18<sup>th</sup> and**

**Tuesday 19<sup>th</sup> March 2024**

**9.00am – 4.00pm**